

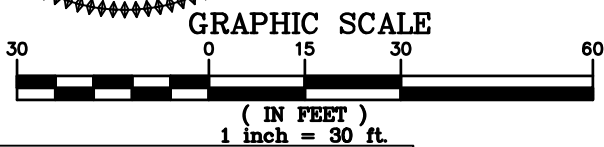
ORLEAN ESTATES
 LOT 4
 HOUSE GRADING PLAN
 MARSHALL MAGISTERIAL DISTRICT
 FAUQUIER COUNTY, VIRGINIA

BUILDING HEIGHT
 AVERAGE FINISHED GRADE (FG): 626.30'
 MEAN ROOF HEIGHT (RH): 20.28'
 FIRST FLOOR ELEVATION (FF): 629.98'
 BUILDING HEIGHT (FF-FG) +RH: 23.96' <35'

COMMONWEALTH OF VIRGINIA

 WILLIAM J. FLYNN
 Lic. No. 1526-B
 2-7-23
 LAND SURVEYOR

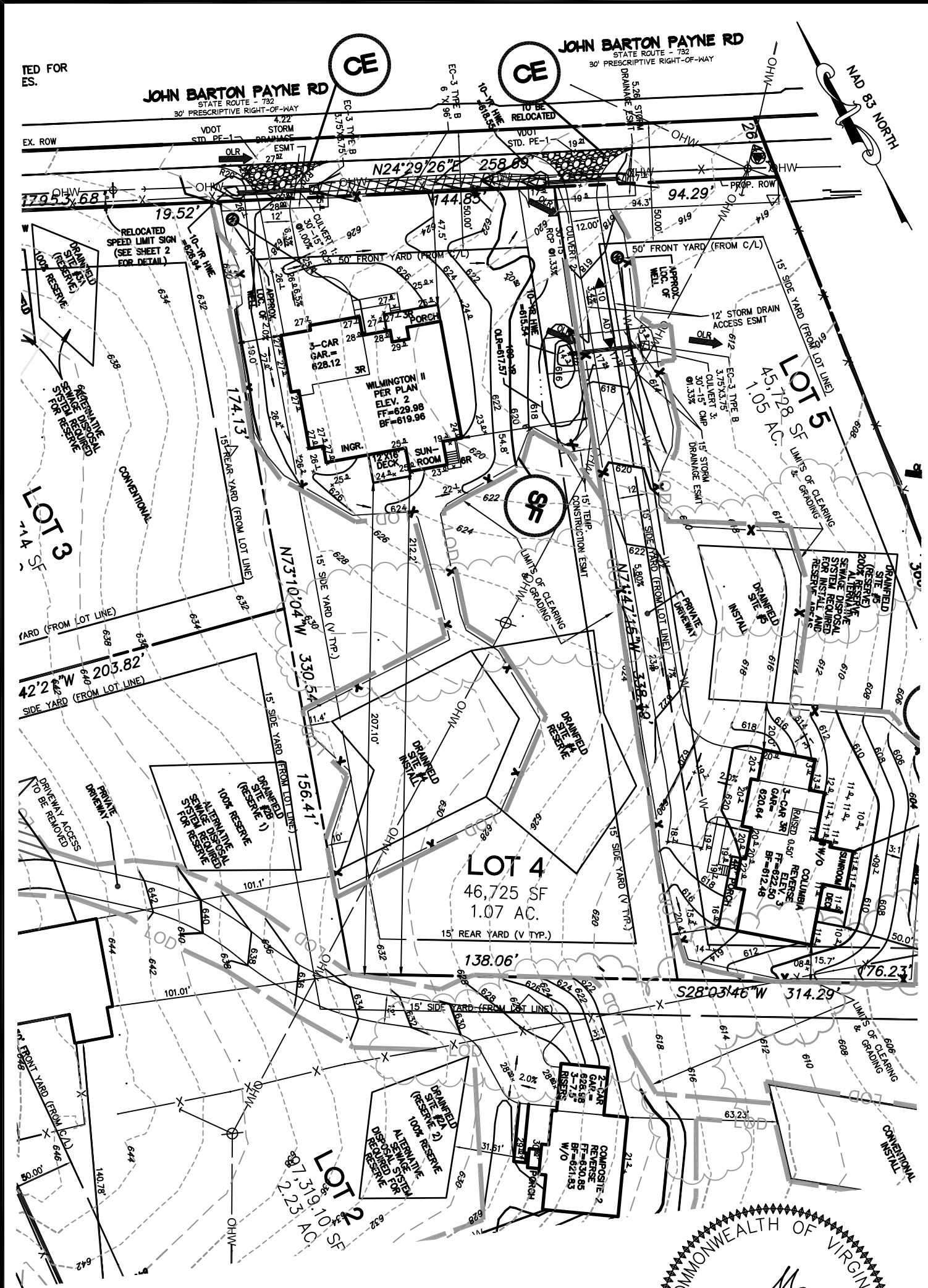
DISTURBED AREA
 24,692 SQ. FT.
 BUILDER: LAKESIDE HOMES



NO TITLE REPORT FURNISHED

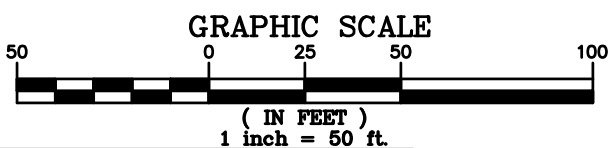
The Engineering Groupe Inc.
 Engineers | Surveyors | Planners
 www.enggroupe.com

West Office 21001 Sycolin Road, Suite 200 Ashburn, VA 20147 PH 703.670.0985	Central Office 13580 Groupe Drive, Suite 200 Woodbridge, VA 22192 PH 703.670.0985	South Office 4936 Southpoint Parkway Fredericksburg, VA 22407 PH 540.710.5987
--	--	--



ORLEAN ESTATES
 LOT 4
 HOUSE GRADING PLAN
 MARSHALL MAGISTERIAL DISTRICT
 FAUQUIER COUNTY, VIRGINIA

COMMONWEALTH OF VIRGINIA
 WILLIAM J. FLYNN
 Lic. No. 1526-B
 2-7-23
 LAND SURVEYOR



NO TITLE REPORT FURNISHED

The Engineering Groupe Inc.
 Engineers | Surveyors | Planners
 www.enggroupe.com

West Office 21001 Sycolin Road, Suite 200 Ashburn, VA 20147 PH 703.670.0985	Central Office 13580 Group Drive, Suite 200 Woodbridge, VA 22192 PH 703.670.0985	South Office 4936 Southpoint Parkway Fredericksburg, VA 22407 PH 540.710.5987
--	---	--